

# Goliath Davit 200kg

Davit designed for lifting of submersible motor pumps or mixers



**GOLIATH**

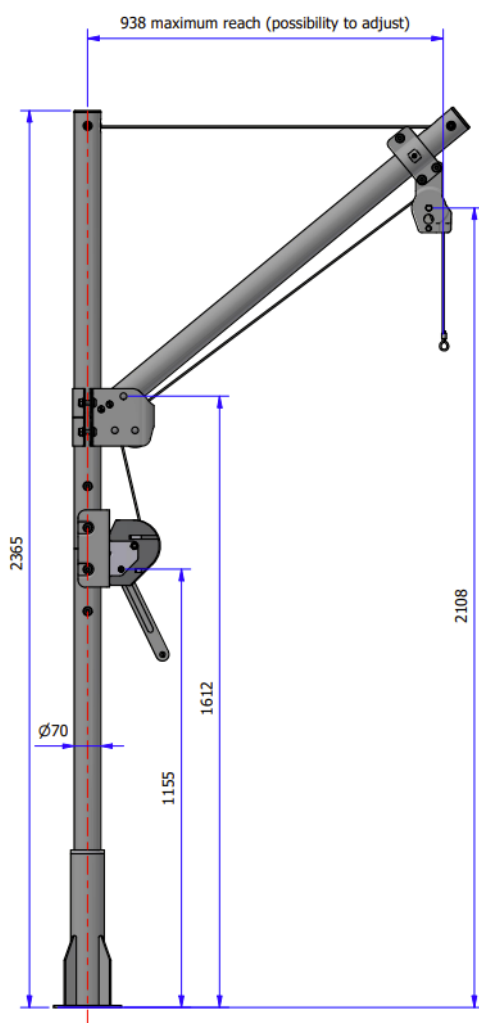
## Product application :

- Sewage treatment plants
- Any lifting application

## Technical data :

Maximum working load	200 kg
Minimum working load	5 kg
Maximum reach	938mm
Weight (without winch and foot)	30.5kg
Height	2.4m

Winch available	Key feature	Cable ø (mm)	Cable Length (m)
6AFD		ø4	15
TPV900	Low effort	ø6	15
TPV1600	Low effort, two handles available	ø6	15
6AFID	Stainless Steel	ø4	15
TPVI900	Low effort, Stainless steel	ø6	15



## Product data:

- Standard galvanized version
  - Davit : hot dip galvanized
  - Winch : zinc plated (stainless steel optional)
  - Cable : stainless steel
  - Pulley support stainless steel
  - Pulley : composite polymer
- Stainless steel version
  - Davit : 304 stainless steel
  - Winch : 316l stainless steel
  - Cable : stainless steel
  - Pulley support stainless steel
  - Pulley : composite polymer
- Various type of Goliath winches available ( see table)
- Rotation 180°

**TALBOT LIFTING AND SECURITY EUROPE**

90 Ranelagh Rd, Ranelagh, Dublin 6, D06, Ireland

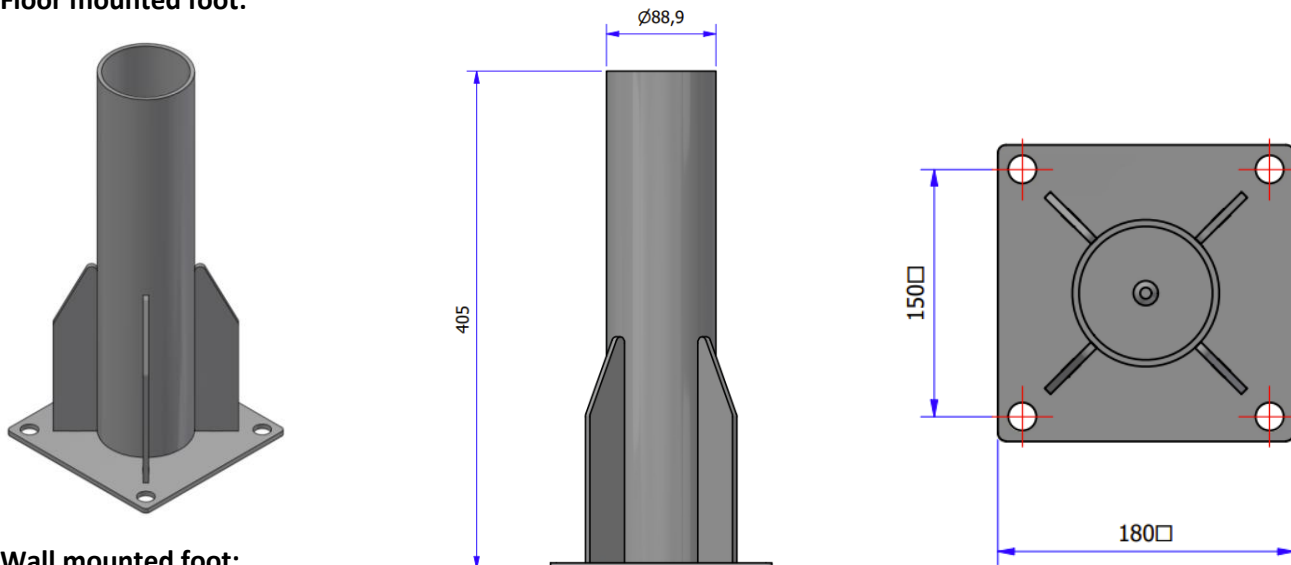
# Goliath Davit 200kg

Davit designed for lifting of submersible motor pumps or mixers

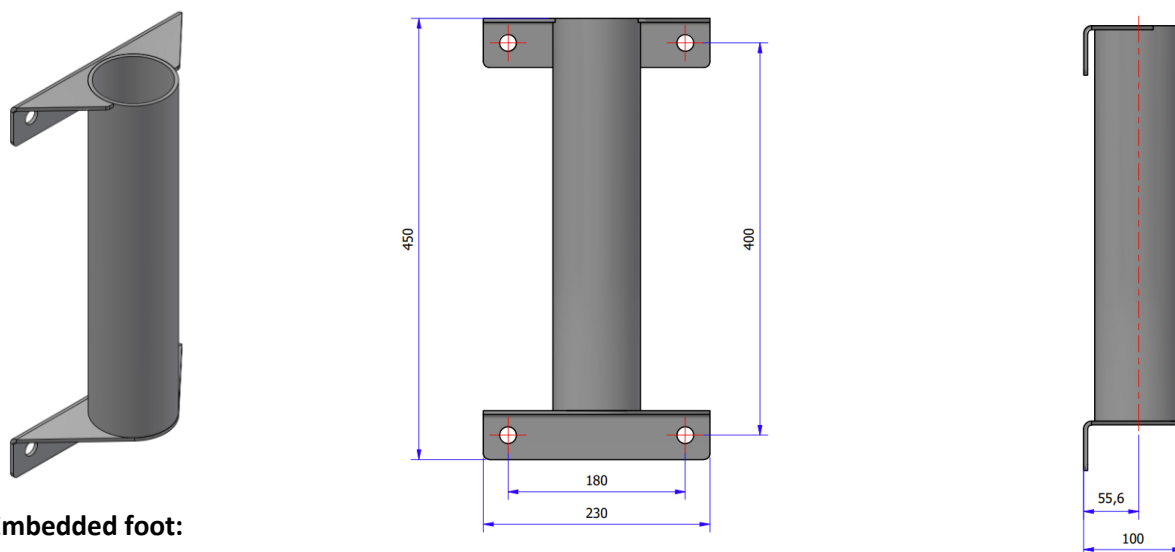


## Available feet for Goliath Davits 150-200kg

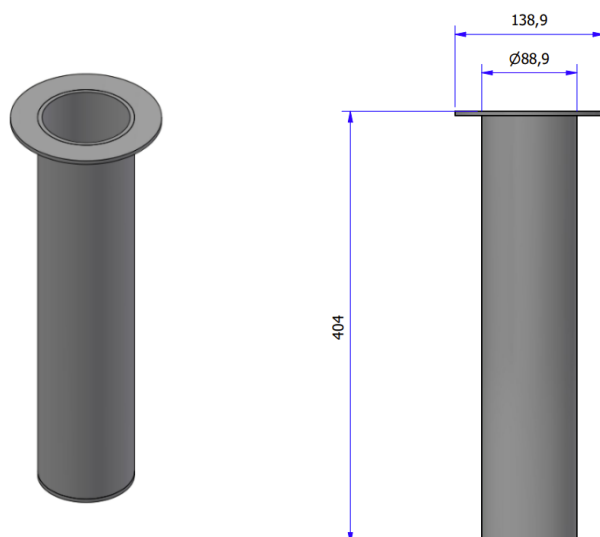
Floor mounted foot:



Wall mounted foot:



Embedded foot:



# Goliath Davit 200kg

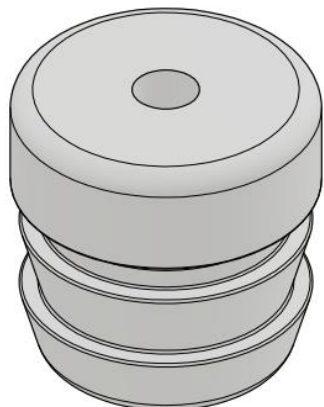
Davit designed for lifting of submersible motor pumps or mixers



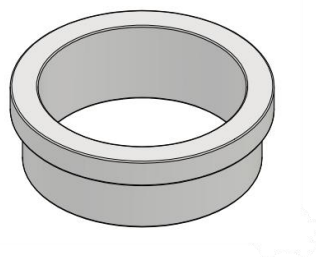
## Adaptation rings:

The adaptation rings allows you to use our davit with different feet.

Lower part:

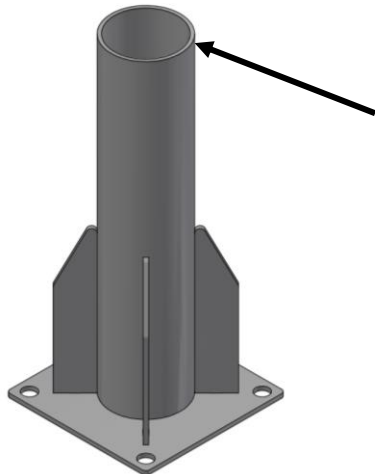


Upper part:



If you have a foot and you need a davit:

Please take measures on the main tube of the foot:



External Diameter	Thickness
Ø88.9mm	5mm
Ø88.9mm	6mm
Ø101.6mm	5mm
Ø101.6mm	6mm
Ø114.3mm	4mm
Ø114.3mm	5mm
Ø114.3mm	6mm